

BAKSTEENHUIS

title	Brickhouse in Groenekan
project adres	Veldlaan 4 3737 AP Groenekan
client	Particulier
architect	Zecc Architecten
adres	westerkade 4 3511 HA Utrecht
project team	Marnix van der Meer, René de Korte, Steven Nobel, Roy van Maarseveen
contractor	Bouwbedrijf Van Rhenen
program	Dwelling
period	2010-2013

The brick house stands on the verge of village and landscape. In this house village characteristics and landscape qualities meet. The architecture of this house is founded on a traditional brick design with rural characteristics. All the surrounding houses are brickwork and have a sloping roof with ceramic roof tiles. There is a sight of chimneys, overhangings, wooden shutters, alcoves and other subtle accents. A bright and modern house has been created by using and reinterpreting these ingredients.



ZECC ARCHITECTEN BV TRACTIEWEG 41 3534 AP UTRECHT
THE NETHERLANDS T+31(0)30 273 1289 INFO@ZECC.NL WWW.ZECC.NL
BANK NL59 RABO 0394 6127 44 KVK 30 183 613 LID BNA

ZECC

GROUND ED ARCHITECTURE



The typical shape of the roof rises from the landscape and the inside living areas are focused on the surrounding landscape. The house is embedded in its environment by its shape, spatial construction and the used materials. It is constructed almost exclusively out of one type of material: bricks! The elongated shapes of brickwork possess a strong differentiation and thereby connects with the rural character of the surroundings.



zecc

GRAUNDED ARCHITECTURE

The house looks as if it is a monolithic brick sculpture because the facades and the roof areas are all made of the same material. The Danish brick manufacturer Peterson has developed bricks especially for this project. This causes the house front to seamlessly merge into the roof. Every brick is handmade, which enables a great variety of solid corner pieces and moulded bricks. Also the chimneys, lintel and brick-on-edge sills are made with the same material. From a similar set brick, manufacturer Peterson, has previously created the famous bricks for Peter Zumthors Kolumba Museum in Cologne.



Paul Kozlowski

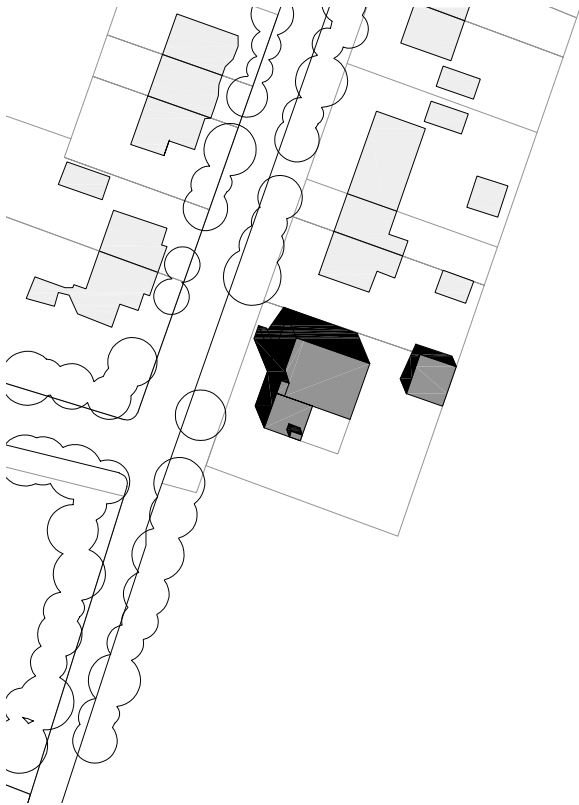


zecc

GROUNDING ARCHITECTURE



The brick monolith is perforated by neat window-openings with deep nudes of the frames. The side facing the street has a relatively closed façade, but moving towards the landscape openings become wider and the house brightens up.



0 5 10 15 20 25

zecc

GROUNDING ARCHITECTURE



An incision in the front side marks the entrance to the house. Here the use of bright colours matches the plinth of neighbouring houses and breaks with its usual graveness. It is meant as an invitation that gives away a hint of the lighter interior of the house. Also at the rear a marked incision is made in the house's dimensions. Again the light interior comes forward to ease the transition to the garden.

zecc

GROUNDING ARCHITECTURE



zecc

GROUNDING ARCHITECTURE



The house consists partly of two storeys and partly of one storey. Town-planning wise, the higher part matches with the adjacent two-storey houses whereas the lower part merges into the landscape. To enable a larger living space a basement is added so the dwelling still fits proportionally regarding its context.

The house is L-shaped, making the patio and garden part of the living experience. At the heart of the house a vacant space with an open staircase spatially connects the two storeys. Additional windows inside the house provide exciting look-troughs and light from surprising angles. The bright interior keeps interacting with the surrounding greenery and the house's brick boundaries; even the terrace and the annex are made of...brick!



zecc

GROUNDING ARCHITECTURE



zecc

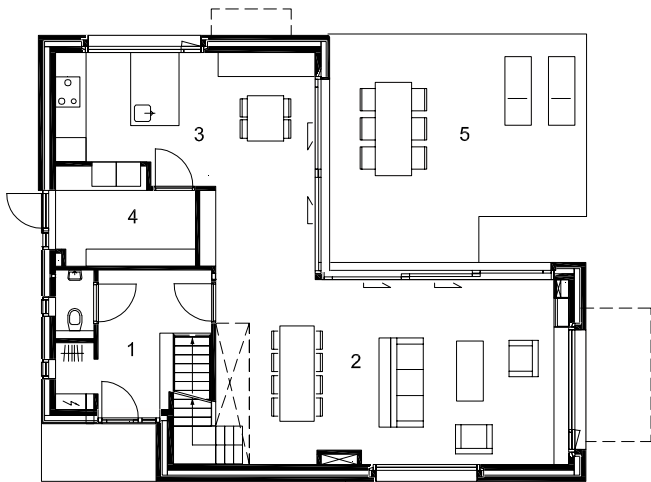
GROUNDING ARCHITECTURE



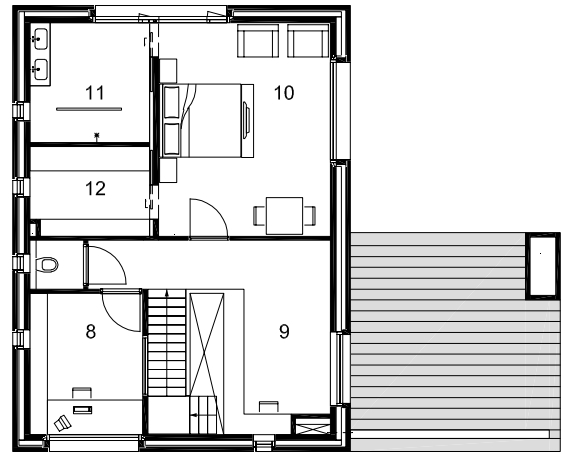
zecc

GROUNDING ARCHITECTURE

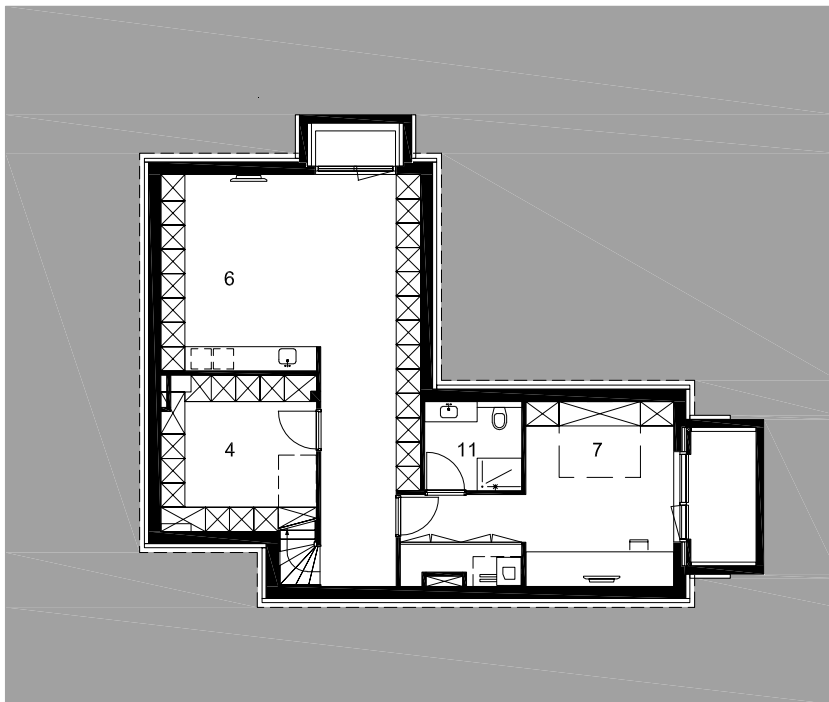
ground floor



first floor



basement



- 1. Entrance
- 2. Living / dining
- 3. Kitchen
- 4. Storage
- 5. Terrace
- 6. Multifunctionele space
- 7. Guestroom
- 8. Study
- 9. Stair landing
- 10. Bedroom
- 11. Bathroom
- 12. Walk in closet

Contact

Zecc

Zecc Architecten BV
 Tractieweg 41
 3543 AP Utrecht
 Netherlands
 T+31(0)30 273 1289
 info@zecc.nl www.zecc.nl

Photographer

JRimageworks
 www.JRimageworks.com

