

THE ISLAND MEEERSTAD

client	Nijhuis Bouw
category	housing
schedule	27 ground-level residences
floor plan	160 - 260 m ²
project team	Marnix van der Meer, Jos van der Linde, Rosa van Hijfte, Jordi Rondeel, Mees Dijkman
building contractor	Nijhuis Bouw, Assen
public space	LAP Landscape & Urban Design
period	2017 - 2021
location	Meerstad Groningen, The Netherlands

To the east of the city of Groningen lies the urban development district of Meerstad. A neighbourhood where everything revolves around the perception and the use of water. The Island project forms a rather special place within the district. The Island will have a robust, development of 27 interlinked ground-level homes. It is entirely surrounded by water, edged with jetties and fringes of reeds. The buildings have been situated at the edge of the island and the residences have been spaciouly designed with a garden and jetty in extension of the living room. In this way a superb living experience to the water is created.



ZECC ARCHITECTEN BV TRACTIEWEG 41 3534 AP UTRECHT
THE NETHERLANDS T+31(0)30 273 1289 INFO@ZECC.NL WWW.ZECC.NL
BANK NL59 RABO 0394 6127 44 KVK 30 183 613 LID BNA





The homes have been designed as a coherent whole in a light creamy white brick with wood accentuations. It reminds one of a Mediterranean atmosphere, providing a permanent holiday feeling. The architecture is a strong ensemble, but each side of the island is slightly different and harmonised to the orientation. There is an interspersion of individual free-standing interlinked houses, semi-detached houses and a section with several wide terraced houses. All property fencing has been incorporated in the design and is implemented in brickwork with storage space. At the corners there will be large residences with bold end walls facing the water. Here, part of the terrace is covered and the quay has a bricked-up jetty to enhance the robust character of the island.



situation

zccc



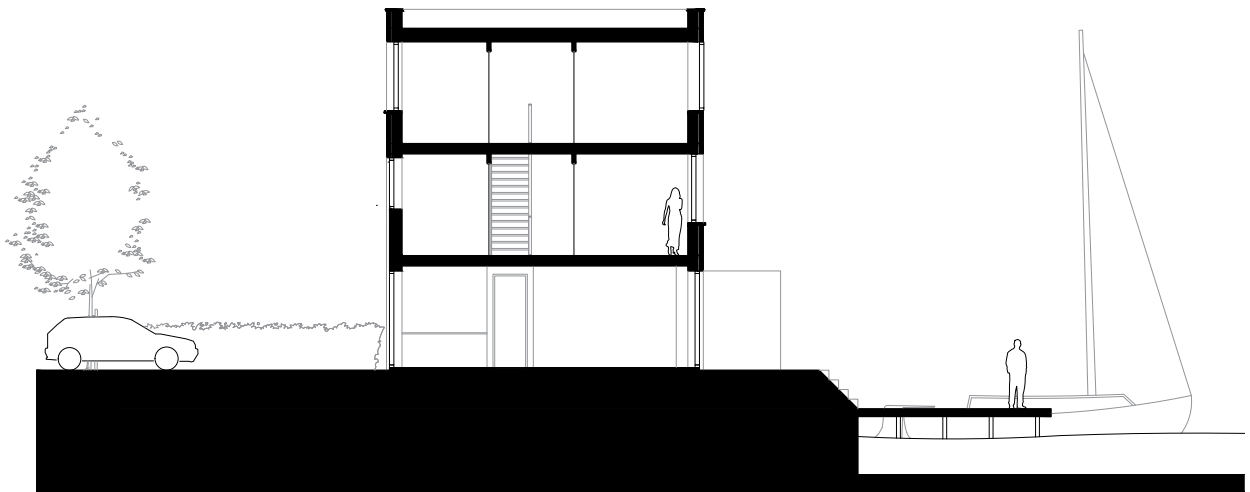


The Island is linked to the mainland by means of a narrow connection. Special houses have been designed at The Island's entrance and this provides access to a large green courtyard. Here, the atmosphere is more informal and there is space for communal use. In consultation with residents, the verdant courtyard will be completed as a flower garden, providing space for a barbecue or a playground for children. Spacious gardens have been designed for the homes with on-site parking facilities. Differing from the façades on the water-side, plenty of wood has been applied in the architecture on the inside to provide a warm cosiness in the courtyard. The building volume has been broken open on the first and second floors to allow light to penetrate into the courtyard and at some spots a view has been created towards the water. The houses have an option to create a terrace on the first floor, so that one can enjoy the waving greenery and shimmering water at the same time.



ZECC



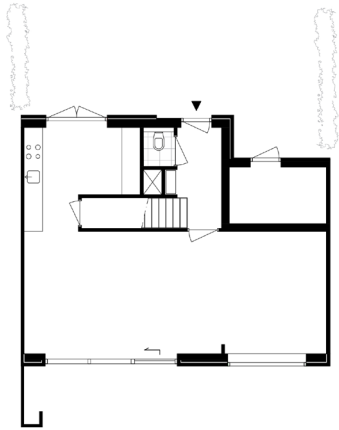


section

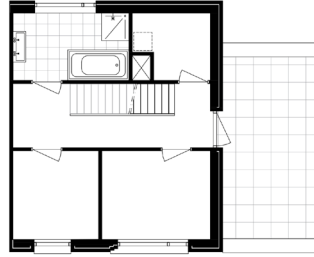
ZECC

GROUNDED ARCHITECTURE

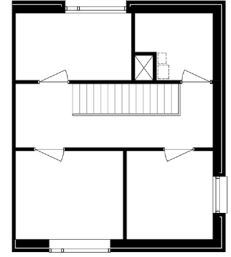
TYPE 1



ground floor



first floor



second floor





CONTACT

Zecc Architecten

Tractieweg 41 (studio A)
3534 AP Utrecht
The Netherlands
T+31(0)30 273 1289
info@zecc.nl | www.zecc.nl

photography

Stijn Poelstra
www.stijnpoelstra.com

GRAUNDED ARCHITECTURE